

# Capillary Fittings

Our range of capillary fittings include end feed and solder ring options and are available in both copper and brass, offering a lightweight, fast and simple joint for copper pipe, ideal for domestic and commercial heating and plumbing applications.

Available in sizes from 6mm to 159mm, we have a fitting to suit most applications and projects. All fittings are guaranteed against manufacturing defects for 25 years and are manufactured to BS EN 1254 and WRAS approved.

## End Feed Fittings

Offering a complete range of sizes, from 6mm to 159mm our end feed fittings provide a traditional connection for commercial and residential installations. And our range of larger fittings is ideal for more complex and demanding commercial projects, providing reliability and security of connection.

The end feed joint is created through the process of capillary action as solder is applied to the end feed fitting to make an easy, effective connection.

## Solder Ring Fittings

With a comprehensive selection of fittings, Flowflex solder ring fittings are available in copper and brass and are manufactured to the highest standards. Sizes range from 8mm to 54mm.

All fittings comply with British and International standards, manufactured to BS EN 1254 under quality management standard ISO9001:2015. A ring of high quality lead-free solder is located in each fitting with the joint secured through capillary action as the pre-soldered fitting is heated to make both an easy and effective connection, without the need to use additional solder.

## Dimensions

### End Feed

Equal fittings with uniform connections are shown with one size. e.g. 15mm

Reduced fittings with two connections are shown with the largest size first. e.g. 22 x 15mm

### Code (European)

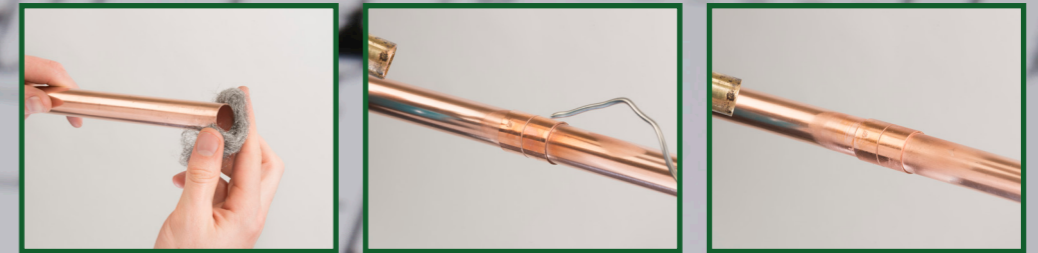
Tees and other reduced fittings of unequal sizes are shown with the largest end first, then the branch, followed by the remaining end on the run. e.g. 5130R.221522

### Solder Ring

Equal fittings with uniform connections are shown with one size. e.g. 15mm

Reduced fittings with two connections are shown with the largest size first. e.g. 22 x 15mm

Tees and other reduced fittings of unequal sizes are shown with the largest end first, then the opposite run, followed by the branch. e.g. 22 x 22 x 15mm



## Capillary Fittings Index

### End Feed Fittings to EN 1254-1 and EN 1254-4



Code: **5001A**  
Page 44



Code: **5002A**  
Page 44, 51



Code: **5040**  
Page 44



Code: **5041**  
Page 44, 51



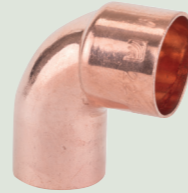
Code: **5085**  
Page 44



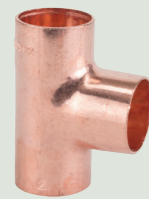
Code: **5086**  
Page 44



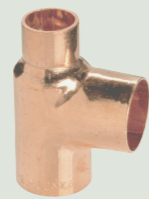
Code: **5090**  
Page 45, 51



Code: **5092**  
Page 45, 51



Code: **5130**  
Page 45, 51



Code: **5130R**  
Page 45, 46



Code: **5240**  
Page 46, 52



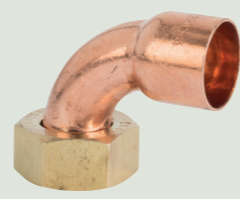
Code: **5243**  
Page 46, 52



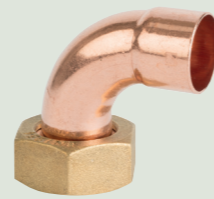
Code: **5270**  
Page 47, 52



Code: **5301**  
Page 47, 53



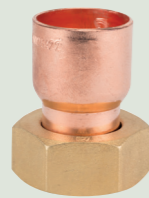
Code: **C803SFEF**  
Page 47



Code: **C805SCEF**  
Page 47



Code: **C901EF**  
Page 47



Code: **C903SFEF**  
Page 47



Code: **C904LEF**  
Page 48



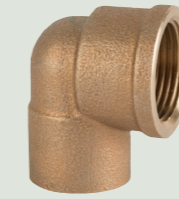
Code: **C905SCEF**  
Page 48

## Capillary Fittings Index

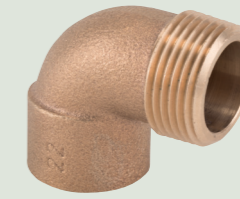
### End Feed Fittings to EN 1254-1 and EN 1254-4



Code: **C906EF**  
Page 48



Code: **4090G**  
Page 48



Code: **4092G**  
Page 48



Code: **4130G**  
Page 48



Code: **4243G**  
Page 49, 53



Code: **4270G**  
Page 49, 53



Code: **4341G**  
Page 49



Code: **B020**  
Page 49



Code: **FA**  
Page 50



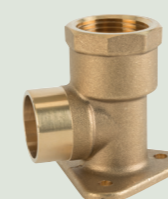
Code: **371**  
Page 50



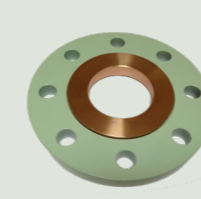
Code: **P440EF**  
Page 50



Code: **P737EF**  
Page 50



Code: **P803WPEF**  
Page 50



Code: **FFL5221**  
Page 53

## Capillary Fittings Index

### Solder Ring Fittings to EN 1254-1 and EN 1254-4



Code: **C701SR**  
Page 54



Code: **C702SR**  
Page 54



Code: **C703SR**  
Page 54



Code: **C704SR**  
Page 54



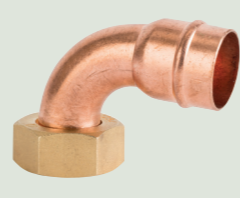
Code: **C705SR**  
Page 54



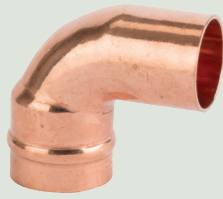
Code: **C706SR**  
Page 55



Code: **C801SR**  
Page 55



Code: **C803SFSR**  
Page 55



Code: **C803SR**  
Page 55



Code: **C804SR**  
Page 55



Code: **C805SCSR**  
Page 55



Code: **C901SR**  
Page 56



Code: **C901SR**  
Page 56



Code: **C901SR**  
Page 56



Code: **C903SFSR**  
Page 56



Code: **C904SR**  
Page 56

## Capillary Fittings Index

### Solder Ring Fittings to EN 1254-1 and EN 1254-4



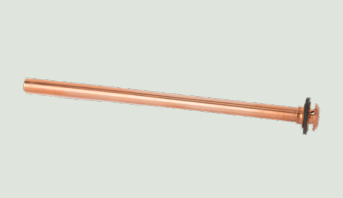
Code: **C905SCSR**  
Page 57



Code: **C923SR**  
Page 57



Code: **B270**  
Page 57



Code: **B270**  
Page 57



Code: **B270**  
Page 57



Code: **P717DRSR**  
Page 58



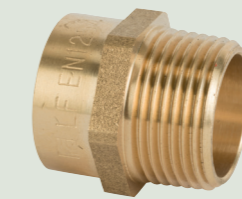
Code: **P802TDRSR**  
Page 58



Code: **P803DRSR**  
Page 58



Code: **P803WPDRSR**  
Page 58



Code: **P902TDRSR**  
Page 58

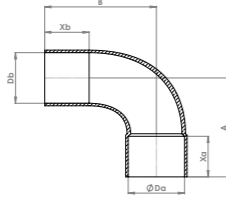


Code: **P903DRSR**  
Page 58



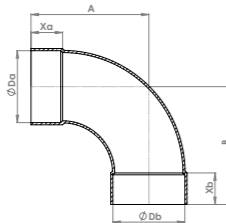
Code: **SRMUC**  
Page 58

**5001a Long Radius Street Elbow**



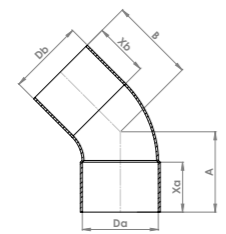
Code	Size	A	B	C	Xa	Xb	Xc
5001a.12	12 x 12mm	23	25	8			
5001a.15	15 x 15mm	29	31	11			
5001a.22	22 x 22mm	42	44	15			
5001a.28	28 x 28mm	52	54	18			
5001a.35	35 x 35mm	65	67	23			
5001a.42	42 x 42mm	77	79	27			
5001a.54	54 x 54mm	97	99	32			

**5002a Long Radius Elbow**



Code	Size	A	B	C	Xa	Xb	Xc
5002a.12	12 x 12mm	23	23	8	8		
5002a.15	15 x 15mm	29	29	11	11		
5002a.22	22 x 22mm	42	42	15	15		
5002a.28	28 x 28mm	52	52	18	18		
5002a.35	35 x 35mm	65	65	23	23		
5002a.42	42 x 42mm	77	77	27	27		
5002a.54	54 x 54mm	97	97	32	32		

**5040 45° Street Elbow**

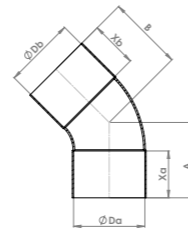


Code	Size	A	B	C	Xa	Xb	Xc
5040.12	12 x 12mm	13	15	8			
5040.15	15 x 15mm	16	18	10			
5040.22	22 x 22mm	23	25	15			
5040.28	28 x 28mm	28	30	18			
5040.35	35 x 35mm	37	39	23			

**5040 Continued**

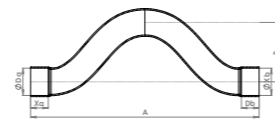
Code	Size	A	B	C	Xa	Xb	Xc
5040.42	42 x 42mm	42	44	27			
5040.54	54 x 54mm	52	54	32			

**5041 45° Equal Elbow**



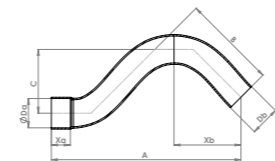
Code	Size	A	B	C	Xa	Xb	Xc
5041.10	10 x 10mm	13	13	7	7		
5041.15	15 x 15mm	17	17	11	11		
5041.22	22 x 22mm	23	23	15	15		
5041.28	28 x 28mm	28	28	17	17		
5041.35	35 x 35mm	37	37	23	23		
5041.42	42 x 42mm	42	42	27	27		
5041.54	54 x 54mm	52	52	32	32		

**5085 Full Crossover**



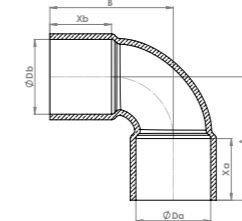
Code	Size	A	B	C	Xa	Xb	Xc
5085.15	15 x 15mm	112	112	11	11		
5085.22	22 x 22mm	145	35	16	16		

**5086 Part Crossover**



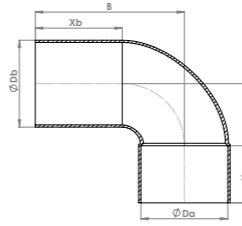
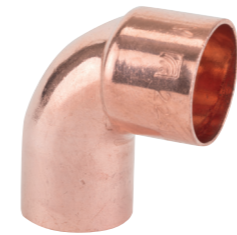
Code	Size	A	B	C	Xa	Xb	Xc
5086.15	15 x 15mm	93	35	27	13	43	
5086.22	22 x 22mm	120	45	35	14	54	

**5090 90° Equal Elbow**



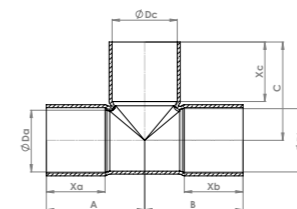
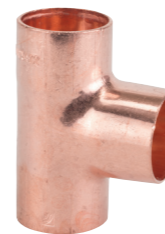
Code	Size	A	B	C	Xa	Xb	Xc
5090.08	8 x 8mm	13	13	6	6		
5090.10	10 x 10mm	15	15	7	7		
5090.12	12 x 12mm	16	16	8	8		
5090.15	15 x 15mm	19	19	10	10		
5090.22	22 x 22mm	28	28	15	15		
5090.28	28 x 28mm	35	35	18	18		
5090.35	35 x 35mm	46	46	23	23		
5090.42	42 x 42mm	55	55	27	27		
5090.54	54 x 54mm	70	70	32	32		

**5092 90° Street Elbow**



Code	Size	A	B	C	Xa	Xb	Xc
5092.10	10 x 10mm	15	17	7			
5092.15	15 x 15mm	19	21	8			
5092.22	22 x 22mm	28	30	12			
5092.28	28 x 28mm	35	37	16			
5092.35	35 x 35mm	46	54	24			
5092.42	42 x 42mm	56	66	29			
5092.54	54 x 54mm	71	82	39			

**5130 Equal Tee**

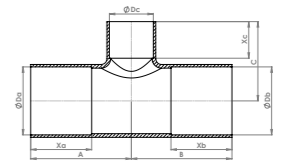
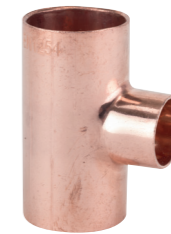


Code	Size	A	B	C	Xa	Xb	Xc
5130.06	6 x 6 x 6mm	11	11	11	6	6	6
5130.08	8 x 8 x 8mm	12	12	12	6	6	6
5130.10	10 x 10 x 10mm	14	14	14	8	8	8
5130.12	12 x 12 x 12mm	18	18	18	9	9	9

**5130 Continued**

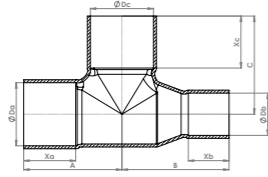
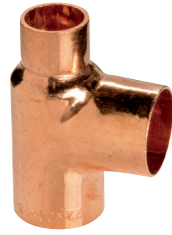
Code	Size	A	B	C	Xa	Xb	Xc
5130.15	15 x 15 x 15mm	20	20	20	11	11	11
5130.22	22 x 22 x 22mm	28	28	28	16	16	16
5130.28	28 x 28 x 28mm	34	34	34	19	19	19
5130.35	35 x 35 x 35mm	42	42	42	22	22	22
5130.42	42 x 42 x 42mm	50	50	50	27	27	27
5130.54	54 x 54 x 54mm	61	61	61	32	32	32

**5130R Reduced Branch Tee**



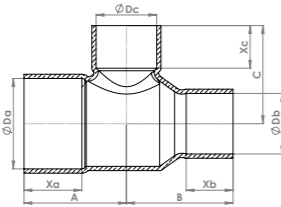
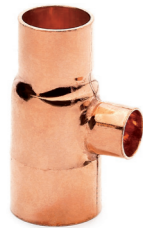
Code	Size	A	B	C	Xa	Xb	Xc
5130R.151015	15 x 15 x 10mm	17	17	17	6	9	6
5130R.221022	22 x 22 x 10mm	25	25	17	9	12	6
5130R.221522	22 x 22 x 15mm	25	25	23	9	12	9
5130R.281528	28 x 28 x 15mm	28	28	26	9	15	9
5130R.282215	28 x 15 x 22mm	31	30	31	12	15	19
5130R.281522	28 x 22 x 15mm	28	28	26	9	15	12
5130R.282228	28 x 28 x 22mm	31	31	31	12	15	12
5130R.351535	35 x 35 x 15mm	32	32	30	9	19	0
5130R.352235	35 x 35 x 22mm	36	36	35	13	19	13
5130R.352835	35 x 35 x 28mm	38	38	38	15	19	15
5130R.421542	42 x 42 x 15mm	36	36	34	9	23	9
5130R.422242	42 x 42 x 22mm	40	40	39	13	23	13
5130R.422842	42 x 42 x 28mm	43	43	42	16	23	16
5130R.423542	42 x 42 x 35mm	46	46	46	19	23	19
5130R.541554	54 x 54 x 15mm	41	41	40	9	29	9
5130R.542254	54 x 54 x 22mm	45	45	45	13	29	13
5130R.542854	54 x 54 x 28mm	48	48	48	16	29	16
5130R.543554	54 x 54 x 35mm	51	51	52	19	29	19
5130R.544254	54 x 54 x 42mm	55	55	56	23	29	23

**5130R Reduced End Tee**



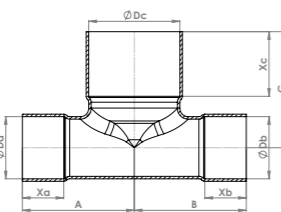
Code	Size	A	B	C	Xa	Xb	Xc
5130R.151510	15 x 10 x 15mm	19	19	19	8	8	11
5130R.222215	22 x 15 x 22mm	28	27	28	12	12	16
5130R.282815	28 x 15 x 28mm	34	33	34	15	15	22
5130R.282822	28 x 22 x 28mm	34	35	34	15	15	19
5130R.353522	35 x 22 x 35mm	42	42	42	19	19	26
5130R.353528	35 x 28 x 35mm	42	42	42	19	19	23
5130R.424235	42 x 35 x 42mm	50	50	50	23	23	27
5130R.545442	54 x 42 x 54mm	61	62	61	29	29	35

**5130R Reduced End & Branch Tee**



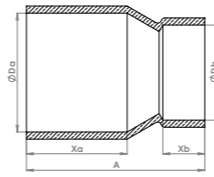
Code	Size	A	B	C	Xa	Xb	Xc
5130R.221515	22 x 15 x 15mm	25	24	23	9	12	13
5130R.281515	28 x 15 x 15mm	28	27	26	9	15	16
5130R.282222	28 x 22 x 22mm	31	32	31	12	15	16
5130R.352222	35 x 22 x 22mm	36	37	35	13	19	21
5130R.352828	35 x 28 x 28mm	38	40	38	15	19	21
5130R.423535	42 x 35 x 35mm	46	46	46	19	23	23

**5130R Reduced Both Ends Tee**



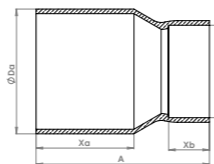
Code	Size	A	B	C	Xa	Xb	Xc
5130R.152215	15 x 15 x 22mm	27	27	28	16	12	16
5130R.222822	22 x 22 x 28mm	35	35	34	19	15	19
5130R.352228	35 x 28 x 22mm	36	37	35	13	19	18

**5240 Reducing Coupling**



Code	Size	A	B	C	Xa	Xb	Xc
5240.1008	10 x 8mm	17					
5240.1208	12 x 8mm	19					
5240.1508	15 x 8mm	24					
5240.1510	15 x 10mm	24					
5240.1512	15 x 12mm	24					
5240.2212	22 x 12mm	32					
5240.2215	22 x 15mm	32					
5240.2815	28 x 15mm	38					
5240.2822	28 x 22mm	40					
5240.3515	35 x 15mm	48					
5240.3522	35 x 22mm	48					
5240.3528	35 x 28mm	48					
5240.4228	42 x 28mm	56					
5240.4235	42 x 35mm	60					
5240.5422	54 x 22mm	70					
5240.5428	54 x 28mm	70					
5240.5435	54 x 35mm	70					

**5243 Fitting Reducer**

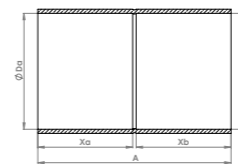


Code	Size	A	B	C	Xa	Xb	Xc
5243.0806	8 x 6mm	16			6		
5243.1006	10 x 6mm	20			6		
5243.1008	10 x 8mm	20			8		
5243.1210	12 x 10mm	22			8		
5243.1508	15 x 8mm	26			7		
5243.1510	15 x 10mm	24			8		
5243.1512	15 x 12mm	26			8		
5243.2212	22 x 12mm	33			8		
5243.2215	22 x 15mm	35			13		
5243.2812	28 x 12mm	41			9		
5243.2815	28 x 15mm	43			11		
5243.2822	28 x 22mm	44			16		
5243.3515	35 x 15mm	50			11		
5243.3522	35 x 22mm	50			15		

**5243 Continued**

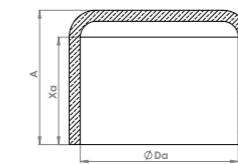
Code	Size	A	B	C	Xa	Xb	Xc
5243.3528	35 x 28mm	50			18		
5243.3215	42 x 15mm	65			11		
5243.4222	42 x 22mm	58			16		
5243.4228	42 x 28mm	58			18		
5243.4235	42 x 35mm	60			25		
5243.5415	54 x 15mm	70			10		
5243.5422	54 x 22mm	70			18		
5243.5428	54 x 28mm	70			25		
5243.5435	54 x 35mm	70			25		
5243.5442	54 x 42mm	70			25		

**5270 Straight Coupling**



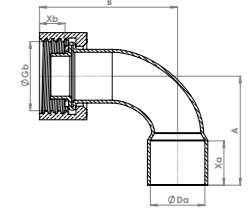
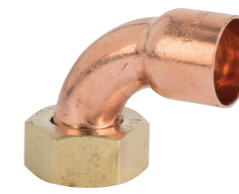
Code	Size	A	B	C	Xa	Xb	Xc
5270.08	8 x 8mm	15			6	6	
5270.10	10 x 10mm	17			7	7	
5270.12	12 x 12mm	19			8	8	
5270.15	15 x 15mm	24			11	11	
5270.22	22 x 22mm	33			15	15	
5270.28	28 x 28mm	40			18	18	
5270.35	35 x 35mm	49			23	23	
5270.42	42 x 42mm	58			27	27	
5270.54	54 x 54mm	69			32	32	

**5301 Stop End**



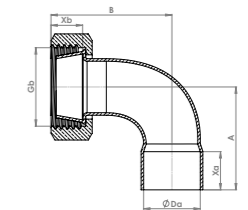
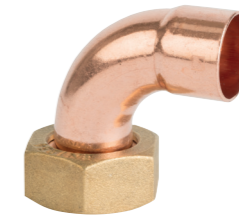
Code	Size	A	B	C	Xa	Xb	Xc
5301.08	8mm	9			6		
5301.10	10mm	9			7		
5301.12	12mm	10			8		
5301.15	15mm	12			10		
5301.22	22mm	17			15		
5301.28	28mm	20			18		
5301.35	35mm	25			23		
5301.42	42mm	29			27		
5301.54	54mm	34			32		

**C803SFEF Bent Tap Connector**



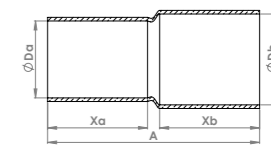
Code	Size	A	B	C	Xa	Xb	Xc
C803SFEF.1	15mm x 1/2"	35	35		10	7	
C803SFEF.2	22mm x 3/4"	44	45		15	8	

**C805SCEF Bent Cylinder Union**



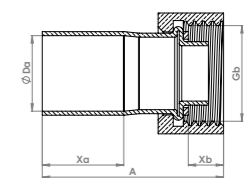
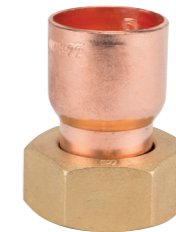
Code	Size	A	B	C	Xa	Xb	Xc
C805SCEF.4	22mm x 1"	41	45		16	9	

**C901EF Metric x Imperial Coupling**



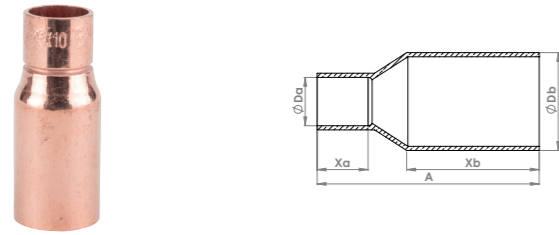
Code	Size	A	B	C	Xa	Xb	Xc
C901EF.245	15mm x 1/2"	23			11	11	
C901EF.25	22mm x 3/4"	36			16	15	
C901EF.26	28mm x 1"	40			20	19	
C901EF.27	35mm x 1 1/4"	53			23	23	

**C903SFEF Straight Tap Connector**



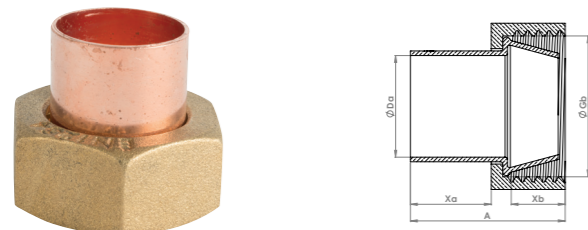
Code	Size	A	B	C	Xa	Xb	Xc
C903SFEF.1	15mm x 1/2"	33			12	8	
C903SFEF.2	15mm x 3/4"	38			12	8	
C903SFEF.3	22mm x 3/4"	45			17	8	

**C904LEF** Long Fitting Reducer



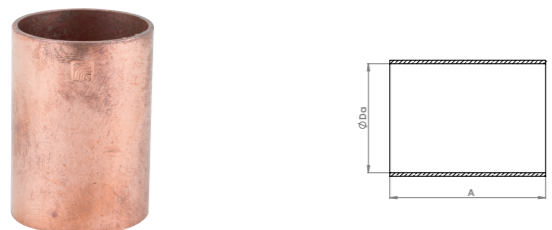
Code	Size	A	B	C	Xa	Xb	Xc
C904LEF.17	15 x 8mm	38			7	22	
C904LEF.18	15 x 10mm	37			8	21	

**C905SCEF** Straight Cylinder Union



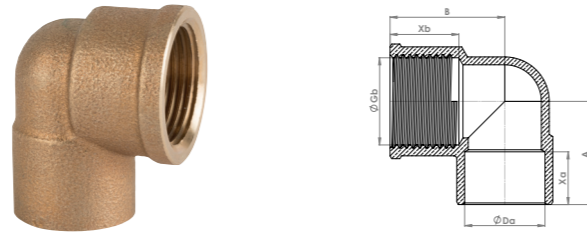
Code	Size	A	B	C	Xa	Xb	Xc
C905SCEF.4	22mm x 1"	34			30	11	
C905SCEF.5	28mm x 1"	52			19	12	

**C906EF** Slip Coupling



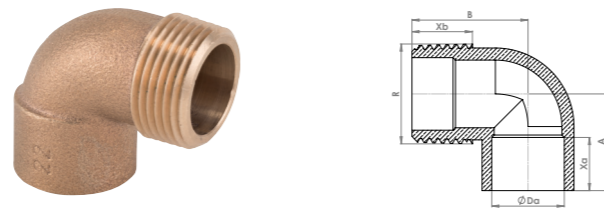
Code	Size	A	B	C	Xa	Xb	Xc
C906EF.05	15mm	24					
C906EF.08	22mm	33					
C906EF.09	28mm	40					
C906EF.10	35mm	48					

**4090G** Female Elbow Adaptor



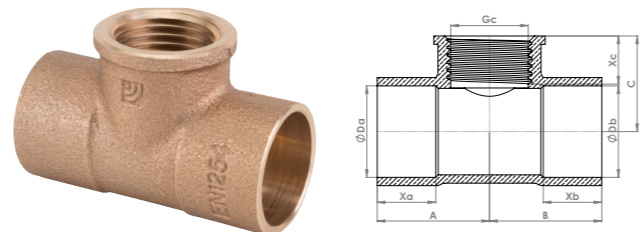
Code	Size	A	B	C	Xa	Xb	Xc
4090G.15X1/2	15mm x 1/2"	22	19		10	12	
4090G.22X1/2	22mm x 1/2"	27	22		15	12	
4090G.22X3/4	22mm x 3/4"	30	23		15	14	
4090G.28X1	28mm x 1"	36	40		18	20	
4090G.35X1.1/4	35mm x 1 1/4"	43	46		23	22	
4090G.42X1.1/2	42mm x 1 1/2"	56	50		27	22	
4090G.54X2	54mm x 2"	64	54		32	21	

**4092G** Male Elbow Adaptor



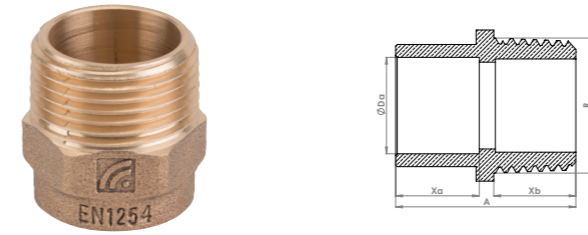
Code	Size	A	B	C	Xa	Xb	Xc
4092G.15X1/2	15mm x 1/2"	20	23		10	12	
4092G.22X3/4	22mm x 3/4"	33	29		15	12	
4092G.28X1	28mm x 1"	35	36		18		

**4130G** Adaptor Tee - Female Branch



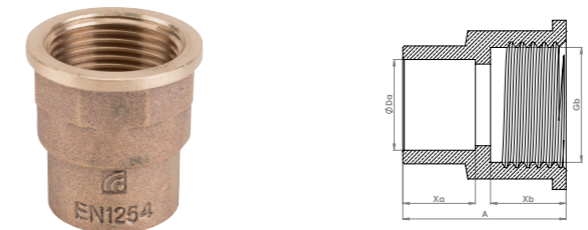
Code	Size	A	B	C	Xa	Xb	Xc
4130G.15X1/2X15	15 x 15mm x 1/2"	22	22	27	10	10	18
4130G.22X1/2X22	22 x 22mm x 1/2"	27	27	23	15	15	13
4130G.22X3/4X22	22 x 22mm x 3/4"	28	28	32	15	15	18
4130G.28X1/2X28	28 x 28mm x 1/2"	31	31	26	19	19	15
P717EF.6	28 x 28mm x 3/4"	33	33	38	18	18	19

**4243G** Male Straight Adaptor



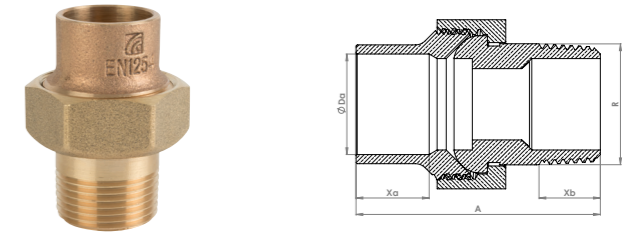
Code	Size	A	B	C	Xa	Xb	Xc
P902TEF.04	8mm x 1/4"	26			7	13	
P902TEF.09	12mm x 1/4"	26			8	13	
P902TEF.12	15mm x 1/4"	29			12	13	
4243G.15X1/2	15mm x 1/2"	28			13	12	
4243G.15X3/4	15mm x 3/4"	29			10	14	
4243G.15X3/8	15mm x 3/8"	22			10	9	
4243G.22X1	22mm x 1"	31			16	17	
4243G.22X1/2	22mm x 1/2"	30			15	12	
4243G.22X3/4	22mm x 3/4"	28			15	13	
4243G.28X1	28mm x 1"	33			18	15	
4243G.35X1.1/4	35mm x 1 1/4"	44			23	19	
4243G.35X1	35mm x 1"	43			23	16	
4243G.42X1.1/2	42mm x 1 1/2"	50			27	21	
4243G.54X2	54mm x 2"	57			27	24	

**4270G** Female Straight Adaptor



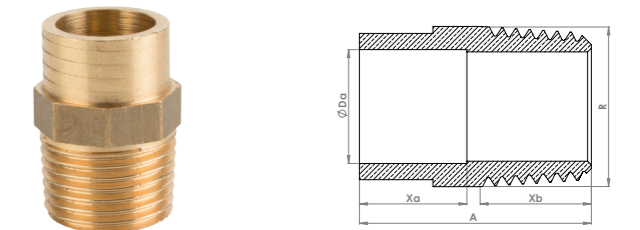
Code	Size	A	B	C	Xa	Xb	Xc
4270G.15X1/2	15mm x 1/2"	27			12	12	
P903EF.10	15mm x 1/4"	27			11	13	
4270G.15X3/4	15mm x 3/4"	27			10	13	
4270G.22X1	22mm x 1"	39			15	18	
4270G.22X1/2	22mm x 1/2"	31			15	13	
4270G.22X3/4	22mm x 3/4"	35			15	16	
4270G.28X1	28mm x 1"	40			18	19	
4270G.35X1.1/4	35mm x 1 1/4"	48			23	23	
4270G.42X1.1/2	42mm x 1 1/2"	50			27	20	
4270G.54X2	54mm x 2"	55			27	25	

**4341G** Male Union Adaptor



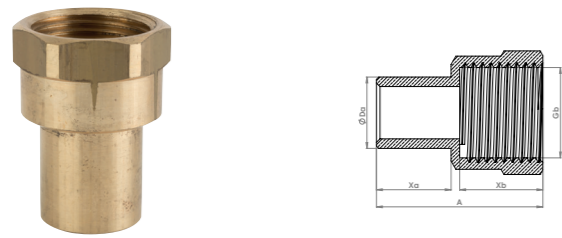
Code	Size	A	B	C	Xa	Xb	Xc
4341G.15X1/2	15mm x 1/2"	45			11	11	
4341G.22X3/4	22mm x 3/4"	53			16	14	
4341G.28X1	28mm x 1"	65			19	16	
4341G.35X1.1/4	35mm x 1 1/4"	76			26	18	
4341G.42X1.1/2	42mm x 1 1/2"	93			28	20	
4341G.54X2	54mm x 2"	105			34	22	

**B020** Male Straight Adaptor - Taper



Code	Size	A	B	C	Xa	Xb	Xc
B020.01	15mm x 1/2"	30			14	14	

**FA Female Straight Adaptor**



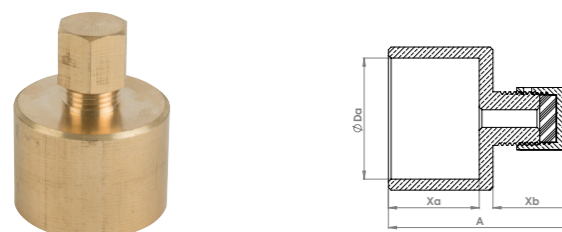
Code	Size	A	B	C	Xa	Xb	Xc
FA.1512	15mm x 1/2"	35			15	17	
FA.2234	22mm x 3/4"	43			23	18	
FA.281	28mm x 1"	50			26	21	

**371.1 Air Vent**



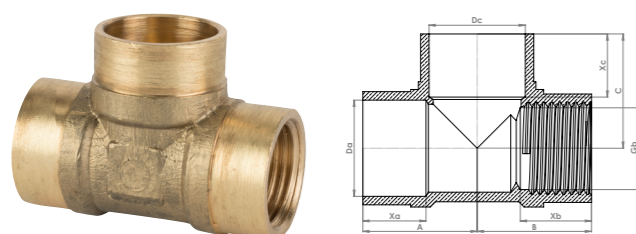
Code	Size	A	B	C	Xa	Xb	Xc
371.1	1/2"	16					

**P440EF Air Vent**



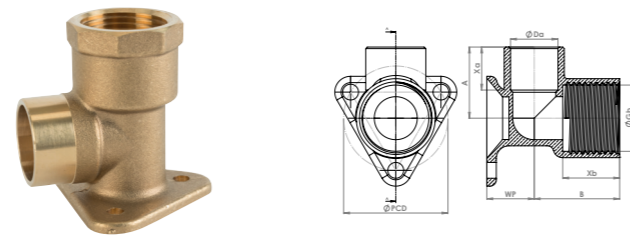
Code	Size	A	B	C	Xa	Xb	Xc
P440EF.1	15mm	26			11	13	
P440EF.2	22mm	32			16	13	

**P737EF Adaptor Tee - Female End**



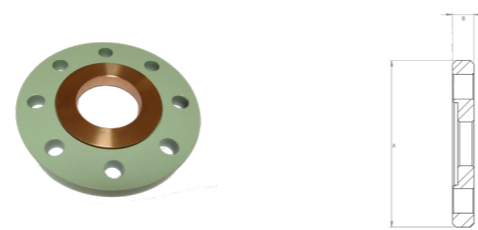
Code	Size	A	B	C	Xa	Xb	Xc
P737EF.1	15 x 1/2" x 15mm	22	22	21	10	10	13
P737EF.2	22 x 1/2" x 22mm	26	26	26	15	16	15

**P803WPEF Wallplate Elbow Adaptor**



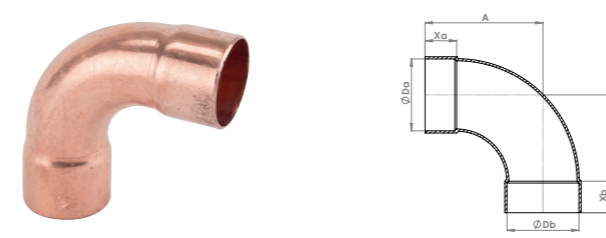
Code	Size	A	B	C	Xa	Xb	WP
P803WPEF.2	15mm x 1/2"	25	23	15	15	15	17
P803WPEF.5	22mm x 3/4"	34	30	22	17	16	20

**FFL5221 Bi Metallic Flange PN16**



Code	Size	A	B	Holes	Bolting
FFL5221.15	15mm x 1/2"	95	16	4	M12
FFL5221.22	22mm x 3/4"	105	16	4	M12
FFL5221.28	28mm x 1"	115	18	4	M12
FFL5221.35	35mm x 1 1/4"	140	18	4	M12
FFL5221.42	42mm x 1 1/2"	150	19	4	M16
FFL5221.54	54mm x 2"	165	19	4	M16
FFL5221.67	67mm x 2 1/2"	185	19	4	M16
FFL5221.76	76mm x 3"	200	21	4	M16
FFL5221.108	108mm x 4"	220	21	8	M16
FFL5221.133	133mm	250	21	8	M16
FFL5221.159	159mm	285	21	8	M20
FFL5221.219	219mm	340	23	12	M20

**5002a Long Radius Elbow**



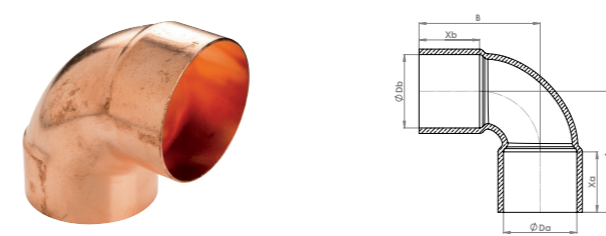
Code	Size	A	B	C	Xa	Xb	Xc
5002a.76	76 x 76mm	125	125		33	33	
5002a.108	108 x 108mm	177	177		47	47	

**5041 45° Equal Elbow**



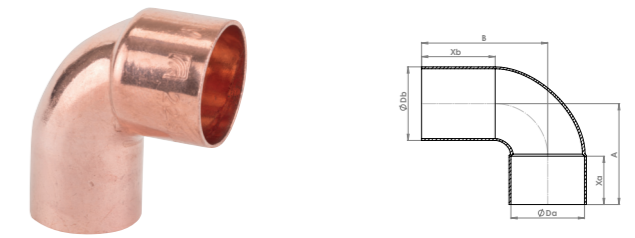
Code	Size	A	B	C	Xa	Xb	Xc
5041.67	67 x 67mm	65	65		36	36	
5041.76	76 x 76mm	68	68		36	36	
5041.108	108 x 108mm	110	110		50	50	
5041.133	133 x 133mm	280	280		45	45	
5041.159	159 x 159mm	335	335		45	45	

**5090 90° Equal Elbow**



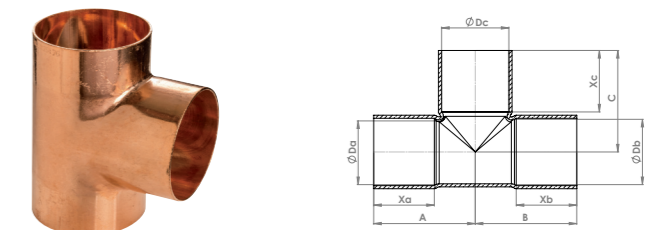
Code	Size	A	B	C	Xa	Xb	Xc
5090.67	67 x 67mm	83	83		33	33	
5090.76	76 x 76mm	91	91		33	33	
5090.108	108 x 108mm	127	127		47	47	
5090.133	133 x 133mm	127	127		47	47	
5090.159	159 x 159mm	160	160		60	60	

**5092 90° Street Elbow**



Code	Size	A	B	C	Xa	Xb	Xc
5092.76	76 x 76mm	91	105		58		

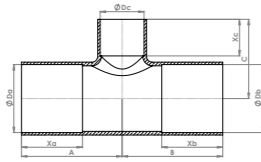
**5130 Equal Tee**



Code	Size	A	B	C	Xa	Xb	Xc
5130.67	67 x 67 x 67mm	78	78	78	36	36	36
5130.76	76 x 76 x 76mm	80	80	80	34	34	34
5130.108	108 x 108 x 108mm	112	112	112	48	48	48
5130.133	133 x 133 x 133mm	135	135	135	50	50	50
5130.159	159 x 159 x 159mm	160	160	160	60	60	60

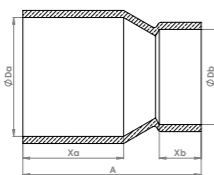
## Large Size End Feed Fittings

### 5130R Reduced Branch Tee



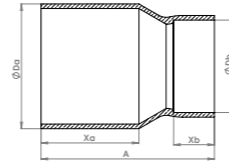
Code	Size	A	B	C	Xa	Xb	Xc
5130R.672867	67 x 67 x 28	54	54	61	21	42	35
5130R.673567	67 x 67 x 35	58	58	64	25	41	21
5130R.674267	67 x 67 x 42	61	61	67	27	41	27
5130R.675467	67 x 67 x 54	67	67	74	33	42	33
5130R.762876	76 x 76 x 28	59	59	70	25	46	25
5130R.763576	76 x 76 x 35	59	59	70	25	46	25
5130R.764276	76 x 76 x 42	63	63	74	29	46	29
5130R.765476	76 x 76 x 54	69	69	79	35	46	35
5130R.766776	76 x 76 x 67	78	78	81	44	48	44
5130R.10822108	108 x 108 x 22	72	72	88	24	72	24
5130R.10835108	108 x 108 x 35	77	77	92	29	65	29
5130R.10842108	108 x 108 x 42	80	80	97	32	70	32
5130R.10854108	108 x 108 x 54	86	86	97	38	65	38
5130R.10867108	108 x 108 x 67	91	91	97	43	64	43
5130R.10876108	108 x 108 x 76	95	95	97	47	64	47
5130R.133108133	133 x 133 x 108	139	139	142	89	94	89
5130R.15954159	159 x 159 x 54	90	90	118	42	86	42
5130R.15967159	159 x 159 x 67	101	101	120	53	86	53
5130R.15976159	159 x 159 x 76	101	101	120	53	86	53
5130R.159108159	159 x 159 x 108	117	117	142	69	94	69
5130R.159133159	159 x 159 x 133	130	130	120	92	86	82
5130R.219159219	219 x 219 x 159	185	185	175	115	110	107

### 5240 Reducing Coupling



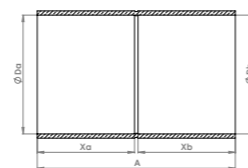
Code	Size	A	B	C	Xa	Xb	Xc
5240.6742	67 x 42mm	78					
5240.6754	67 x 54mm	85					
5240.7654	76 x 54mm	84					
5240.7667	76 x 67mm	85					

### 5243 Fitting Reducer



Code	Size	A	B	C	Xa	Xb	Xc
5243.6722	67 x 22mm	80				20	
5243.6728	67 x 28mm	80				20	
5243.6735	67 x 35mm	80				20	
5243.6742	67 x 42mm	88				30	
5243.6754	67 x 54mm	80				32	
5243.7635	76 x 35mm	90				30	
5243.7642	76 x 42mm	90				30	
5243.7654	76 x 54mm	85				35	
5243.7667	76 x 67mm	81				32	
5243.10835	108 x 35mm	116				32	
5243.10842	108 x 42mm	116				42	
5243.10854	108 x 54mm	116				32	
5243.10867	108 x 67mm	112				32	
5243.10876	108 x 76mm	108				36	
5243.13367	133 x 67mm	119				32	
5243.13376	133 x 76mm	119				36	
5243.133108	133 x 108mm	106				36	
5243.15976	159 x 76mm	120				30	
5243.159108	159 x 108mm	150				40	
5243.159133	159 x 133mm	160				40	
5243.219159	219 x 159mm	169				45	

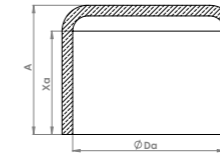
### 5270 Straight Coupling



Code	Size	A	B	C	Xa	Xb	Xc
5270.67	67 x 67mm	72			33	33	
5270.76	76 x 76mm	72			33	33	
5270.108	108 x 108mm	100			47	47	
5270.133	133 x 133mm	100			47	47	
5270.159	159 x 159mm	100			47	47	
5270.219	219 x 219mm	125			75	75	

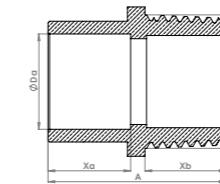
## Large Size End Feed Fittings

### 5301 Stop End



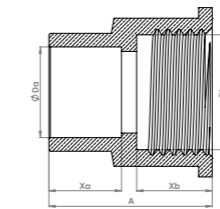
Code	Size	A	B	C	Xa	Xb	Xc
5301.67	67mm	35				33	
5301.76	76mm	35				33	
5301.108	108mm	49				47	
5301.159	159mm	64				62	

### 4243G Male Straight Adaptor



Code	Size	A	B	C	Xa	Xb	Xc
4243G.67X2.1/2	67mm x 2 1/2"	72			32	31	
4243G.76X3	76mm x 3"	76			34	31	
4243G.108X4	108mm x 4"	98			47	37	

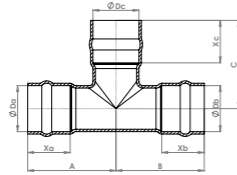
### 4270G Female Straight Adaptor



Code	Size	A	B	C	Xa	Xb	Xc
4270G.67X2.1/2	67mm x 2 1/2"	64			32	28	
4270G.76X3	76mm x 3"	65			33	28	
4270G.108X4	108mm x 4"	83			48	31	

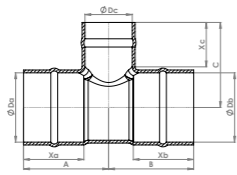


**C701SR Equal Tee**



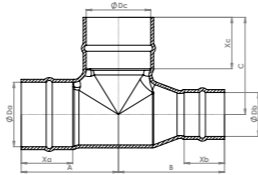
Code	Size	A	B	C	Xa	Xb	Xc
C701SR.02	8 x 8 x 8mm	16	16	16	10	10	10
C701SR.03	10 x 10 x 10mm	20	20	20	12	12	12
C701SR.04	12 x 12 x 12mm	19	19	19	13	13	13
C701SR.05	15 x 15 x 15mm	22	22	22	15	15	15
C701SR.08	22 x 22 x 22mm	30	30	30	20	20	20
C701SR.09	28 x 28 x 28mm	37	37	37	22	22	22
C701SR.10	35 x 35 x 35mm	46	46	46	26	26	26
C701SR.11	42 x 42 x 42mm	53	53	53	31	31	31
C701SR.12	54 x 54 x 54mm	65	65	65	38	38	38

**C702SR Reduced Branch Tee**



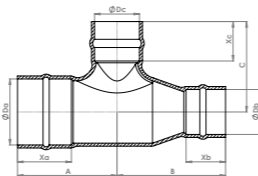
Code	Size	A	B	C	Xa	Xb	Xc
C702SR.133	15 x 15 x 10mm	23	23	26	14	15	11
C702SR.16	22 x 22 x 15mm	36	36	27	20	20	14
C702SR.19	28 x 28 x 15mm	30	30	29	22	22	14
C702SR.20	35 x 35 x 28mm	33	33	31	22	22	19
C702SR.21	35 x 35 x 22mm	38	38	39	30	30	20
C702SR.22	35 x 35 x 15mm	37	37	34	29	29	14
C702SR.23	35 x 35 x 28mm	42	42	43	27	27	23
C702SR.24	42 x 42 x 15mm	40	40	59	32	32	14
C702SR.25	42 x 42 x 22mm	43	43	42	33	33	20
C702SR.26	42 x 42 x 28mm	47	47	46	31	31	26
C702SR.27	42 x 42 x 35mm	49	49	50	32	32	27
C702SR.33	54 x 54 x 15mm	47	47	45	38	38	15
C702SR.34	54 x 54 x 22mm	49	49	49	37	37	19
C702SR.35	54 x 54 x 28mm	51	51	51	38	38	27
C702SR.36	54 x 54 x 35mm	55	55	57	38	38	27
C702SR.37	54 x 54 x 42mm	58	58	62	37	37	32

**C703SR Reduced End Tee**



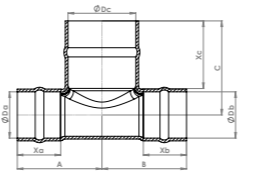
Code	Size	A	B	C	Xa	Xb	Xc
C703SR.15	22 x 15 x 22mm	30	31	32	19	14	19
C703SR.17	28 x 15 x 28mm	39	41	39	23	14	22
C703SR.18	28 x 22 x 28mm	40	41	38	22	18	21
C703SR.20	35 x 22 x 35mm	49	46	46	28	20	28
C703SR.21	35 x 28 x 35mm	49	48	47	29	24	28

**C704SR Reduced End & Branch Tee**



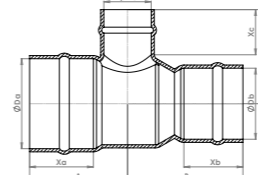
Code	Size	A	B	C	Xa	Xb	Xc
C704SR.14	22 x 15 x 15mm	28	29	27	19	14	14
C704SR.171	28 x 22 x 22mm	35	38	34	23	19	18

**C705SR Reduced Both Ends Tee**



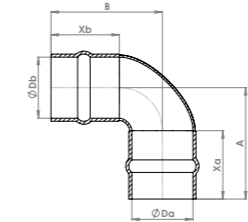
Code	Size	A	B	C	Xa	Xb	Xc
C705SR.13	15 x 15 x 22mm	35	35	32	16	16	20
C705SR.165	22 x 22 x 28mm	34	34	37	20	20	22

**C706SR Reduced 3 Ways Tee**



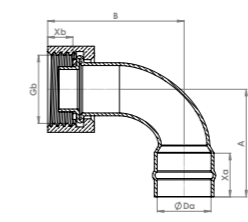
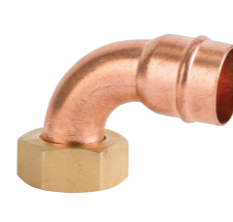
Code	Size	A	B	C	Xa	Xb	Xc
C706SR.176	28 x 22 x 15mm	32	35	31	22	19	13

**C801SR 90° Equal Elbow**



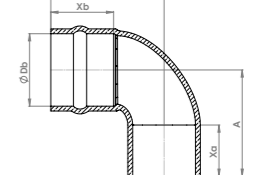
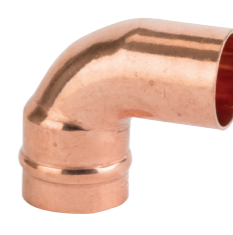
Code	Size	A	B	C	Xa	Xb	Xc
C801SR.02	8 x 8mm	18	18	9	9		
C801SR.03	10 x 10mm	19	19	12	12		
C801SR.04	12 x 12mm	22	22	12	12		
C801SR.05	15 x 15mm	24	24	14	14		
C801SR.08	22 x 22mm	35	35	20	20		
C801SR.09	28 x 28mm	37	37	22	22		
C801SR.10	35 x 35mm	46	46	27	27		
C801SR.11	42 x 42mm	57	57	25	25		
C801SR.12	54 x 54mm	67	67	38	38		

**C803SFSR Bent Tap Connector**



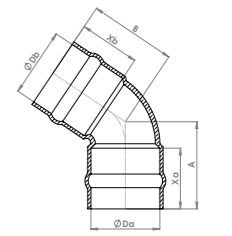
Code	Size	A	B	C	Xa	Xb	Xc
C803SFSR.1	15mm x 1/2"	32	36	14	9		
C803SFSR.2	22mm x 3/4"	47	38	21	9		

**C803SR 90° Street Elbow**



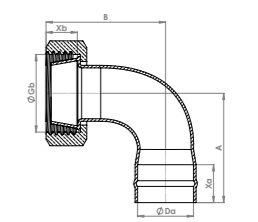
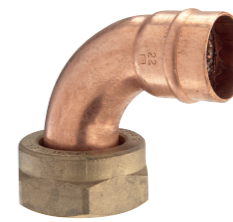
Code	Size	A	B	C	Xa	Xb	Xc
C803SR.05	15 x 15mm	24	25	14	14		
C803SR.08	22 x 22mm	32	36	20	21		
C803SR.09	28 x 28mm	39	42	20	24		
C803SR.11	42 x 42mm	50	61	33	32		

**C804SR 45° Equal Elbow**



Code	Size	A	B	C	Xa	Xb	Xc
C804SR.05	15 x 15mm	17	17	14	14		
C804SR.08	22 x 22mm	24	24	19	19		
C804SR.09	28 x 28mm	31	31	25	25		
C804SR.10	35 x 35mm	36	36	29	29		
C804SR.11	42 x 42mm	41	41	32	32		
C804SR.12	54 x 54mm	49	49	39	39		

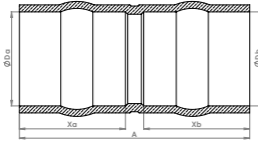
**C805SCSR Bent Cylinder Union**



Code	Size	A	B	C	Xa	Xb	Xc
C805SCSR.4	22mm x 1"	49	45	20	16		

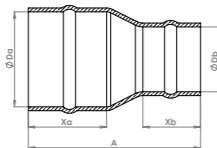
## Solder Ring Fittings

### C901SR Straight Coupling



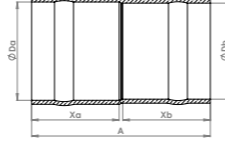
Code	Size	A	B	C	Xa	Xb	Xc
C901SR.02	8 x 8mm	20			10	10	
C901SR.03	10 x 10mm	23			11	11	
C901SR.04	12 x 12mm	26			13	13	
C901SR.05	15 x 15mm	29			14	14	
C901SR.08	22 x 22mm	41			20	20	
C901SR.09	28 x 28mm	46			23	23	
C901SR.10	35 x 35mm	56			28	28	
C901SR.11	42 x 42mm	66			32	32	
C901SR.12	54 x 54mm	79			39	39	

### C901SR Reducing Coupling



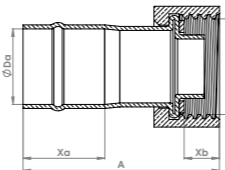
Code	Size	A	B	C	Xa	Xb	Xc
C901SR.17	15 x 8mm	30			11	14	
C901SR.18	15 x 10mm	31			12	14	
C901SR.19	15 x 12mm	31			12	15	
C901SR.20	22 x 15mm	40			14	20	
C901SR.21	28 x 15mm	47			14	24	
C901SR.22	28 x 22mm	50			20	23	
C901SR.23	35 x 28mm	58			25	29	
C901SR.231	35 x 22mm	58			20	29	
C901SR.236	42 x 28mm	66			23	33	
C901SR.2361	42 x 35mm	72			26	36	
C901SR.24	54 x 42mm	79			39	33	
C901SR.239	54 x 35mm	75			29	36	

### C901SR Metric x Imperial Coupling



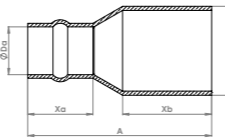
Code	Size	A	B	C	Xa	Xb	Xc
C901SR.27	15mm x 1/2"	28			14	14	
C901SR.25	22mm x 3/4"	41			19	19	
C901SR.26	28mm x 1"	26			13	22	
C901SR.28	35mm x 1 1/4"	62			29	30	

### C903SFSR Straight Tap Connector



Code	Size	A	B	C	Xa	Xb	Xc
C903SFSR.1	15mm x 1/2"	39			16	9	
C903SFSR.2	15mm x 3/4"	48			14	11	
C903SFSR.3	22mm x 3/4"	49			19	9	

### C904SR Fitting Reducer



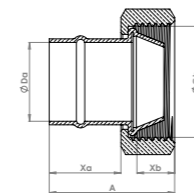
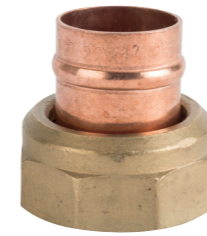
Code	Size	A	B	C	Xa	Xb	Xc
C904SR.16	10 x 8mm	24			11	10	
C904SR.17	15 x 8mm	32			14	15	
C904SR.18	15 x 10mm	31			13	14	
C904SR.19	15 x 12mm	33			14	17	
C904SR.20	22 x 15mm	39			14	18	
C904SR.21	28 x 15mm	43			14	21	
C904SR.22	28 x 22mm	48			20	23	

## Solder Ring Fittings

### C904SR Continued

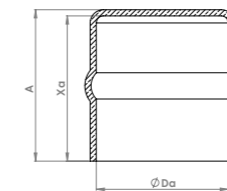
Code	Size	A	B	C	Xa	Xb	Xc
C904SR.23	35 x 28mm	58			22	31	
C904SR.231	35 x 22mm	57			19	29	
C904SR.232	35 x 15mm	55			15	29	
C904SR.233	42 x 15mm	62			14	33	
C904SR.234	42 x 22mm	64			21	33	
C904SR.236	42 x 28mm	66			24	35	
C904SR.2361	42 x 35mm	68			27	34	
C904SR.237	54 x 15mm	75			14	41	
C904SR.2375	54 x 22mm	75			20	38	
C904SR.238	54 x 28mm	73			23	39	
C904SR.239	54 x 35mm	80			29	41	
C904SR.24	54 x 42mm	80			33	41	

### C905SCSR Straight Cylinder Union



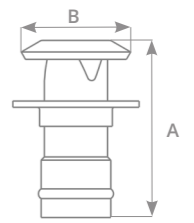
Code	Size	A	B	C	Xa	Xb	Xc
C905SCSR.4	22mm x 1"	36			21	12	

### C923SR Stop End



Code	Size	A	B	C	Xa	Xb	Xc
C923SR.1	8mm	11			9		
C923SR.2	10mm	12			10		
C923SR.4	15mm	15			13		
C923SR.5	22mm	20			18		
C923SR.6	28mm	24			22		
C923SR.7	35mm	29			27		
C923SR.8	42mm	31			29		
C923SR.9	54mm	37			35		

### B270 Pipe Cowl



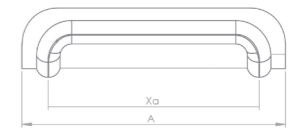
Code	Size	A	B	C	Xa	Xb	Xc
B270.26	15mm	41	28				
B270.22	22mm	59	40				

### B270 Extended Pipe Cowl



Code	Size	A	B	C	Xa	Xb	Xc
B270.38	15mm Extended	500	26				

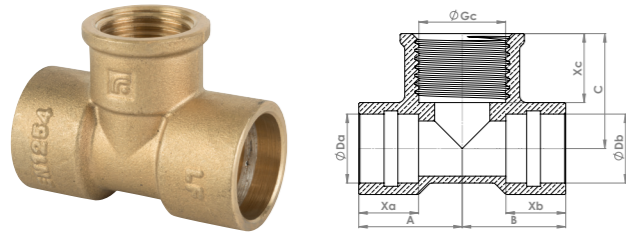
### B270 Click Fix



Code	Size	A	B	C	Xa	Xb	Xc
B270.39	15mm	46			36		
B270.40	22mm	45			36		

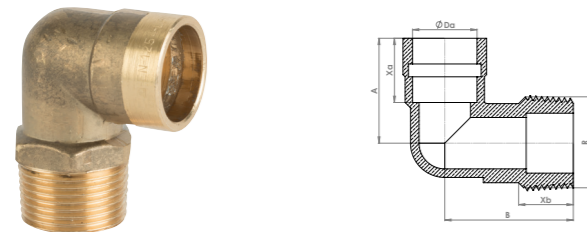
## Solder Ring Fittings

### P717DRSR Adaptor Tee - Female Branch



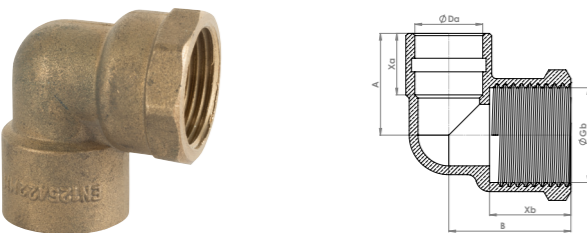
Code	Size	A	B	C	Xa	Xb	Xc
P717DRSR.1	15 x 15mm x 1/2"	22	22	25	12	12	14
P717DRSR.2	22 x 22mm x 1/2"	26	26	27	15	15	14

### P802TDRSR Male Elbow Adaptor



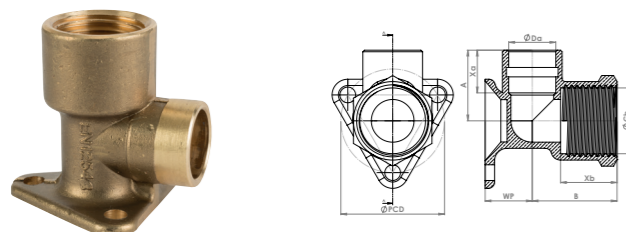
Code	Size	A	B	C	Xa	Xb	Xc
P802TDRSR.13	15mm x 1/2"	25	31		15	14	
P802TDRSR.14	22mm x 3/4"	30	40		17	16	

### P803DRSR Female Elbow Adaptor



Code	Size	A	B	C	Xa	Xb	Xc
P803DRSR.06	15mm x 1/2"	22	25		12	15	
P803DRSR.07	22mm x 3/4"	32	30		20	16	

### P803WPDRSR Wallplate Elbow Adaptor



Code	Size	A	B	C	Xa	Xb	WP
P803WPDRSR.2	15mm x 1/2"	25	23	15	16	15	16

### P902TSR Male Straight Adaptor - Taper



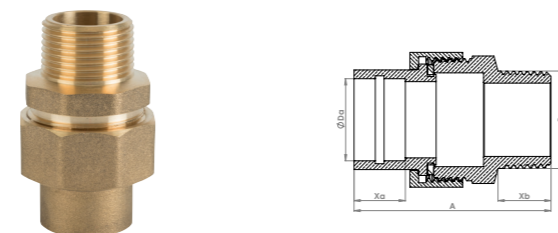
Code	Size	A	B	C	Xa	Xb	Xc
P902TDRSR.14	15mm x 1/2"	28			13	13	
P902TDRSR.12	15mm x 1/4"	32			15	13	
P902TDRSR.18	22mm x 3/4"	30			15	14	
P902TDRSR.19	28mm x 1"	36			18	16	
P902TDRSR.20	35mm x 1 1/4"	38			23	19	
P902TDRSR.21	42mm x 1 1/2"	47			27	19	
P902TDRSR.22	54mm x 2"	56			32	24	

### P903DRSR Adaptor Female Straight



Code	Size	A	B	C	Xa	Xb	Xc
P903DRSR.11	15mm x 3/8"	28			15	13	
P903DRSR.12	15mm x 1/2"	28			15	13	
P903DRSR.18	22mm x 3/4"	33			15	16	
P903DRSR.20	28mm x 1"	40			19	19	
P903DRSR.21	35mm x 1 1/4"	46			23	21	
P903DRSR.22	42mm x 1 1/2"	50			27	21	
P903DRSR.23	54mm x 2"	59			32	26	

### SRMUC Straight Male Union Adaptor



Code	Size	A	B	C	Xa	Xb	Xc
SRMUC.1512	15mm x 1/2"	53			11	15	
SRMUC.2234	22mm x 3/4"	60			15	16	
SRMUC.281	28mm x 1"	67			13	17	
SRMUC.35114	35mm x 1 1/4"	73			13	20	
SRMUC.42112	42mm x 1 1/2"	73			14	21	
SRMUC.542	54mm x 2"	80			16	22	

## Capillary Fittings Technical Information

### End Feed

#### General Specification

Flowflex end feed fittings, manufactured in both copper and bronze, are a fast, reliable and economic method of joining BS EN 1057 copper tube.

End feed fittings connect to copper tube through the process of capillary action with solder forming an easy, effective joint between the fitting and the tube. They are lightweight for easy handling and lend themselves well to confined environments due to their compact sizing.

Flowflex operates a quality management system audited by the British Standards Institute as per for the manufacture and supply of fittings and components for use in all applications of the HVAC industry. It is through these internal systems that we have the confidence to guarantee our end feed fittings against manufacturing defects for 25 years, when installed in accordance with our instructions on specified tube materials and applications.

- Available in sizes from 8mm to 54mm
- Copper fittings manufactured to EN1254-1:1998
- Gunmetal (bronze) fittings manufactured to EN1254-4:1998
- Designed to connect to BS EN 1057 tube
- Marked with the Flowflex logo
- WRAS Approved

#### Approvals



#### Tube Compatibility

All installers should ensure that the size of the fitting matches the size of the pipe, whilst also ensuring both are in good condition and free from damage and imperfections.

Flowflex fittings are designed to connect to BS EN 1057 tube, for water and gas in sanitary and heating applications.

After all plumbing work has been completed, always ensure continuity checks are conducted by a qualified electrician in accordance with regulations (BS 7671: 20001).

#### Working Temperatures and Pressures

Typical examples of soldering alloys	Max Temp. (1) °C	Max pressures for nominal diameters (1) (2) BAR	
		From 6mm up to 34mm	Over 34mm up to 54mm
Lead/tin 50/50% or 60/40%	30	16	16
	65	10	10
	110	6	6
Tin/silver 95/5% Tin/copper Cu 3% Max 0.4% min. Remainder Sn	30	25	25
	65	25	16
	110	16	10

1. For use in applications outside of this table, the approval of the manufacturer should be obtained.
2. Intermediate pressure ratings shall be obtained by interpolation.

**Note:** Soldering alloys with lead and brazing alloys with cadmium are not permitted in installations for water for human consumption.

## Capillary Fittings Technical Information

### Connecting

#### 1. Tube Specification

Ensure the tube conforms to the specification, and that the tube outer diameter matches the size of the fitting. Ensure that both the tube and fitting are clean, in good condition and free from any damage or imperfections.

Flowflex end feed fittings are to be installed with copper tubes that conform to BS EN 1057.

#### 2. Cut Your Pipe To Size

You must cut your pipe accurately. Failure to do so could impact on the quality of your jointing. If your pipe is too short, it might not hit the pipe stop. Too long and strain could be introduced into the system.

When cutting, ends of the tube must be cut cleanly across the tube diameter to allow for a secure connection to the fitting.

#### 3. Clean The Socket of the Pipe

Before creating the joint, it is important that the inside of the pipe is smooth and doesn't interfere with the flow. In the case that flow local to the joint is affected, erosion and corrosion may occur and also vibrations.

Use of a stiff wire brush is recommended to reach the desired outcome. Care must be taken with soft tube to ensure the tube is not deformed by applying too much pressure.

#### 4. Clean The Outside of the Pipe

Cleaning the outside diameter of the tube and the inside of the fittings is imperative to ensure that a secure and reliable joint is formed. Failure to remove all oxides and any material where the fittings and tube overlaps can interfere with capillary action and thus will reduce the strength of the soldered joint, resulting in failure.

To the same effect, over zealous cleaning can result in too much material being removed, resulting in a loose fit and failure.

Use of fine steel wool is recommended here to reach the desired outcome.

#### 5. Apply Flux

As soon as possible after cleaning, flux should be applied sparingly to the inside of the fitting and also the outside of the pipe at the point of overlap. This will help the capillary action and induce a stronger joint.

#### 6. Assembly

Insert the tube into the fitting until the pipe reaches base of the pipe stop. A small twist can also be applied to ensure even coverage of the flux. At this point, any excess flux should be removed using a rag.

Before proceeding to the next step, a uniform space around the circumference of the joint should be sought to allow for good capillary action. Excessive space can lead to cracking of the solder.

#### 7. Heating

When heating, the entire circumference of the fitting should be heated evenly. It is recommended that you preheat the pipe and the fitting before directly heating the joint.

Do not overheat the joint or direct the flame into the face of the fitting cup. Overheating could burn the flux, which will destroy its effectiveness and the solder will not enter the joint properly.

#### 8. Apply Solder

Touch the joint with the solder. If the solder does not melt, remove it and continue heating. If the solder begins to melt, push the solder into the joint whilst continuing to heat the base of the joint.

Solder joints depend on capillary action drawing free-flowing molten solder into the narrow clearance between the fitting and the tube. Molten solder metal is drawn into the joint by capillary action regardless of whether the solder flow is upward, downward or horizontal.

#### 9. Cooling and Cleaning

You should allow the joint to cool naturally. Cooling the joint forcefully could stress the joint.

When cool remove any excess flux and residue with a wet rag.

#### 10. Testing and Commissioning

Systems should always be tested for joint integrity. Whenever possible, completed systems should be flushed to remove debris.

#### Tube Compatibility

All installers should ensure that the size of the fitting matches the size of the pipe, whilst also ensuring both are in good condition and free from damage and imperfections.

Flowflex fittings are designed to connect to BS EN 1057 tube, for water and gas in sanitary and heating applications.

After all plumbing work has been completed, always ensure continuity checks are conducted by a qualified electrician in accordance with regulations (BS 7671: 20001).

## Capillary Fittings Technical Information

### Large End Feed

#### General Specification

Flowflex large end feed fittings, manufactured in both copper and bronze, are a fast, reliable and economic method of joining BS EN 1057 copper tube.

End feed fittings connect to copper tube through the process of capillary action with solder forming an easy, effective joint between the fitting and the tube. They are lightweight for easy handling and lend themselves well to confined environments due to their compact sizing.

Flowflex operates a quality management system audited by the British Standards Institute as per for the manufacture and supply of fittings and components for use in all applications of the HVAC industry. It is through these internal systems that we have the confidence to guarantee our large end feed fittings against manufacturing defects for 25 years, when installed in accordance with our instructions on specified tube materials and applications.

- Available in sizes from 67mm to 159mm
- Copper fittings manufactured to EN1254-1 & EN1254-5
- Gunmetal (bronze) fittings manufactured to EN1254-4:1998
- Designed to connected to BS EN 1057 tube
- Marked with the Flowflex logo

#### Approvals



#### Tube Compatibility

All installers should ensure that the size of the fitting matches the size of the pipe, whilst also ensuring both are in good condition and free from damage and imperfections.

Flowflex fittings are designed to connect to BS EN 1057 tube, for water and gas in sanitary and heating applications.

After all plumbing work has been completed, always ensure continuity checks are conducted by a qualified electrician in accordance with regulations (BS 7671: 20001).

#### Working Temperatures and Pressures

Typical examples of soldering alloys	Max Temp. (1) °C	Max pressures for nominal diameters (1) (2) BAR	
		From 54mm up to 108mm	Over 108mm up to 159mm
Silver/copper Cadmium-free 55% to 40% Ag	30	16	5
Silver with cadmium 30% or 40% Ag	65	16	3
Copper/phosphorus 94/6% or copper/ phosphorus with 2% Silver 92/6/2%	110	10	2

1. For use in applications outside of this table, the approval of the manufacturer should be obtained.
2. Intermediate pressure ratings shall be obtained by interpolation.

**Note:** Soldering alloys with lead and brazing alloys with cadmium are not permitted in installations for water for human consumption.

#### Connecting

1. Ensure the tube conforms to BS EN 1057.
2. Select the correct fitting for the size of the tube to be connected.
3. Ends of the tube for jointing must be cut cleanly across the tube diameter and be free from contamination, surface damage or defects.
4. Clean the outside diameter of the tube and the inside diameter of the socket with wire wool.
5. Flux should be applied to the mating surfaces.
6. Insert the pipe into the socket and Braze in accordance with the brazing rod manufacturer's instructions.
7. After brazing, fittings must be allowed to cool naturally.
8. Remove all flux residues with hot water.

**Note:** 67mm – 159mm copper fittings must be hard soldered using 'silver brazing alloy' rods.

**Soft soldering is not permitted.**

## Capillary Fittings Technical Information

### Solder Ring

#### General Specification

Flowflex solder ring fittings, manufactured in both copper and bronze, are a fast, reliable and economic method of joining BS EN 1057 copper tube.

Solder ring fittings connect to copper tube through the process of capillary action with solder forming an easy, effective joint between the fitting and the tube. They are lightweight for easy handling and lend themselves well to confined environments due to their compact sizing.

Flowflex operates a quality management system audited by the British Standards Institute as per for the manufacture and supply of fittings and components for use in all applications of the HVAC industry. It is through these internal systems that we have the confidence to guarantee our solder ring fittings against manufacturing defects for 25 years, when installed in accordance with our instructions on specified tube materials and applications.

- Available in sizes from 8mm to 54mm
- Copper fittings manufactured to EN1254-1:1998
- Gunmetal (bronze) fittings manufactured to EN1254-4:1998
- Designed to connected to BS EN 1057 tube
- Marked with the Flowflex logo
- KM Lead - Free Solder 99.304% Sn
- WRAS Approved

#### Approvals



#### Tube Compatibility

All installers should ensure that the size of the fitting matches the size of the pipe, whilst also ensuring both are in good condition and free from damage and imperfections.

Flowflex fittings are designed to connect to BS EN 1057 tube, for water and gas in sanitary and heating applications.

After all plumbing work has been completed, always ensure continuity checks are conducted by a qualified electrician in accordance with regulations (BS 7671: 20001).

#### Working Temperatures and Pressures

Typical examples of soldering alloys	Max Temp. (1) °C	Max pressures for nominal diameters (1) (2) BAR	
		From 6mm up to 34mm	Over 34mm up to 54mm
Tin/silver 95/5%	30	25	25
Tin/copper Cu 3% Max 0.4% min. Remainder Sn	65	25	16
	110	16	10

1. For use in applications outside the scope of this table, the approval of the manufacturer should be obtained.
2. Intermediate pressure ratings shall be obtained by interpolation.

#### Connecting

##### 1. Tube Specification

Ensure the tube conforms to the specification, and that the tube outer diameter matches the size of the fitting. Ensure that both the tube and fitting are clean, in good condition and free from any damage or imperfections.

Flowflex solder ring fittings are to be installed with copper tubes that conform to BS EN 1057.

##### 2. Cut Your Pipe To Size

You must cut your pipe accurately. Failure to do so could impact on the quality of your jointing. If your pipe is too short, it might not hit the pipe stop. Too long and strain could be introduced into the system.

When cutting, ends of the tube must be cut cleanly across the tube diameter to allow for a secure connection to the fitting.

##### 3. Clean The Socket of the Pipe

Before creating the joint, it is important that the inside of the pipe is smooth and doesn't interfere with the flow. In the case that flow local to the joint is affected, erosion and corrosion may occur and also vibrations.

Use of a stiff wire brush is recommended to reach the desired outcome. Care must be taken with soft tube to ensure the tube is not deformed by applying too much pressure.

## Capillary Fittings Technical Information

#### 4. Clean The Outside of the Pipe

Cleaning the outside diameter of the tube and the inside of the fittings is imperative to ensure that a secure and reliable joint is formed. Failure to remove all oxides and any material where the fittings and tube overlaps can interfere with capillary action and thus will reduce the strength of the soldered joint, resulting in failure.

To the same effect, over zealous cleaning can result in too much material being removed, resulting in a loose fit and failure.

Use of fine steel wool is recommended here to reach the desired outcome.

#### 5. Apply Flux

As soon as possible after cleaning, flux should be applied sparingly to the inside of the fitting and also the outside of the pipe at the point of overlap. This will help the capillary action and induce a stronger joint.

#### 6. Assembly

Insert the tube into the fitting until the pipe reaches base of the pipe stop. A small twist can also be applied to ensure even coverage of the flux. At this point, any excess flux should be removed using a rag.

Before proceeding to the next step, a uniform space around the circumference of the joint should be sought to allow for good capillary action. Excessive space can lead to cracking of the solder.

#### 7. Heating

When heating, the entire circumference of the fitting should be heated evenly. It is recommended that you preheat the pipe and the fitting before directly heating the joint.

**Do not overheat the joint or direct the flame into the face of the fitting cup. Overheating could burn the flux, which will destroy its effectiveness and the solder will not enter the joint properly.**

#### 8. Cooling and Cleaning

You should allow the joint to cool naturally. Cooling the joint forcefully could stress the joint.

When cool remove any excess flux and residue with a wet rag.

#### 9. Testing and Commissioning

Systems should always be tested for joint integrity. Whenever possible, completed systems should be flushed to remove debris.